



# Assistant Commandant for Capability Office of Boat Forces



## Acquisition Directorate Boat Acquisition / Acquisition Contracting Program / and Procurement

# USCG Boat Acquisition WorkBoat 2023 01 Dec 2023

CDR Noel Johnson  
Chief, Platform Division  
Office of Boat Forces

Mr. Mark Porvaznik  
Program Manager  
Boat Acquisition Program

Mr. William Lewis  
Contracting Officer



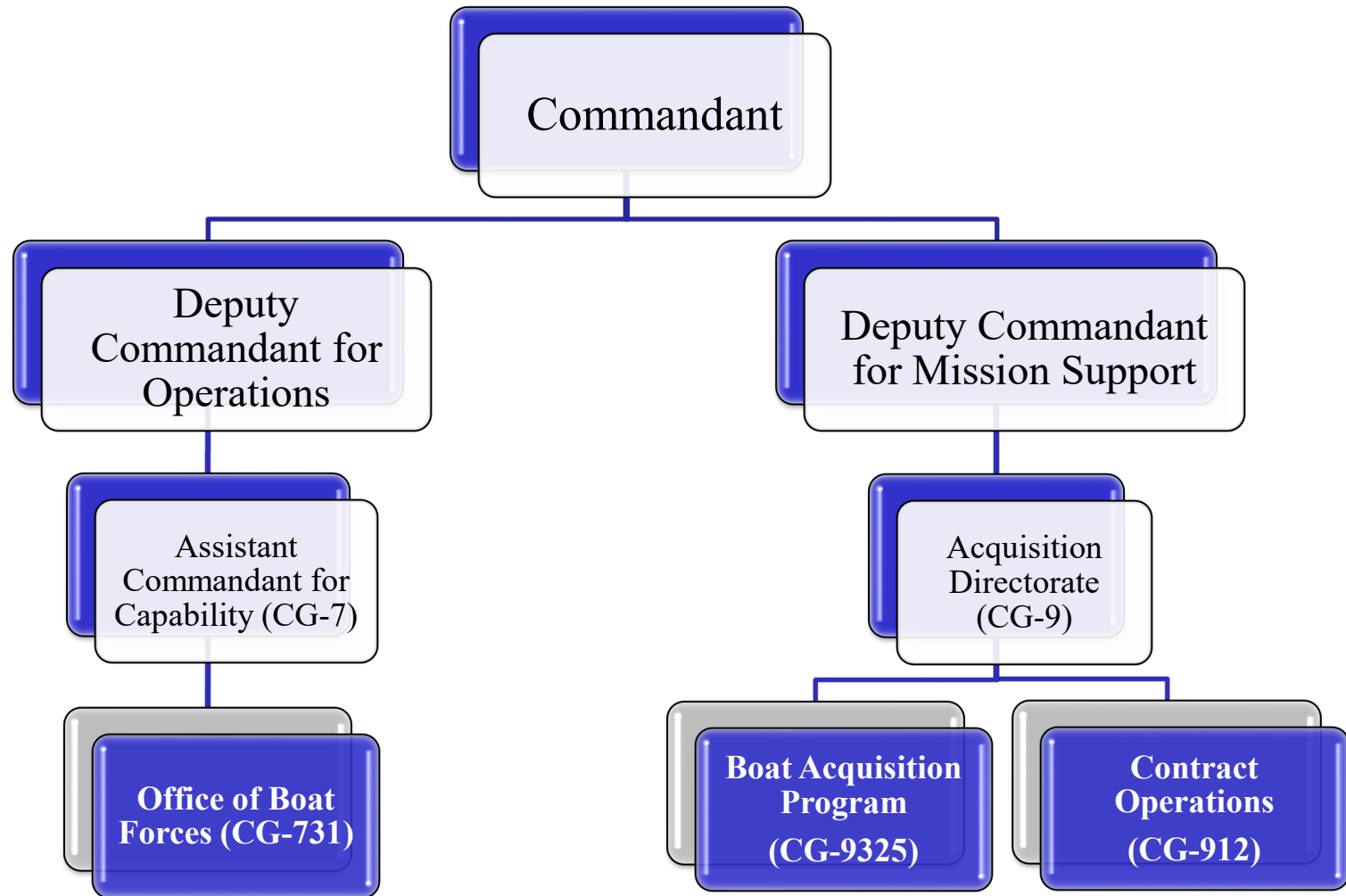
# Outline

---

- **USCG Organization**
- **Boat Forces Fleet**
- **Future Programs**
- **Active Programs**
- **Current Contracts**
- **SPC – HWX Info**
- **Discussion Topics**
- **Proposal Observations**
- **Questions**



# Organization Overview



# Boat Forces Fleet

1,710 Hulls / 53 Boat Classes / 247 Locations / 551 Units

 In some stage of acquisition

## ATON BOATS



## CUTTER BOATS



## RESPONSE BOATS



## SPECIAL PURPOSE CRAFT



# Future Programs

- Programs in Selection: 1
  - Waterways Commerce Cutter (~56, 2024-2034)
- Programs with Active RFP: 0
- Programs at RFI: 3 (qty, dlvy)
  - Trailerable Aids-To-Navigation Boat II (~90, 2024)
  - Polar Security Cutter Polar Landing Craft (~8, 2025)
  - Special Purpose Craft – Heavy Weather (~6, 2026)
- In Development (2-5 years out) (qty, RFI date)
  - Aids-To-Navigation Boat - Large (~36, 2024)
  - Response Boat Medium mid-life (174, 2026)
  - Response Boat Small (~350, 2027)
- Closeout
  - OTH-IV



SPC-HWX



TANB

# Active Programs (award/qty)

---

- **22' CB Large (210/225)** (Aug 2018, up to 39)
- **36' SPC - Law Enforcement II (Navy)** (Aug 2021, up to 60)
- **27' SPC - Shallow Water II** (Sep 2019, up to 45)
- **26' CB Over the Horizon IVc** (Apr 2021, up to 20)
- **26' CB Over the Horizon V** (Jun 2021, up to ~ 200)
- **36' SPC – Boarding Team Delivery** (Sep 2021, 8-12)
- **47' Motor Lifeboat SLEP** (Aug 2019, up to 107)
- **35' CB Long Range Interceptor III** (May 2023, up to 15)
- **22' SPC – Ice Rescue Transport** (2018, up to 12)



# Current Contracts

- **CB-L (210/225):** 39 between 2018-2023
  - In full production
  - 36 delivered, 3 remaining
- **SPC-LE (Navy):** up to 110 (combined USN/USCG) between 2021-2025
  - 4 delivered, 26 ordered
- **SPC-SW II:** 48 between 2019-2023
  - In full production
  - 42 delivered, 6 ordered
- **SPC-IRT:** 10 between 2018-2024
  - 8 delivered, 2 ordered
- **CB-LRI III:** 15 between 2023-2027
  - 1 OT&E boat ordered



# Current Contracts

- **OTH:**

- OTH-IVc: 20 of 20 ordered, 12 delivered (Dec 2021-2024)
- OTH-V: 8 of ~200 ordered, 8 delivered (Jun 2021-2031)



- **SPC-BTD II (Navy): 8-12 between 2021-2025**

- 4 ordered, 2 delivered

- **MLB SLEP: 107 between 2019-2029**

- 27 ordered, 13 delivered
- Building to full production of 20/yr





# SPC-HWX II: Requirements

- ❑ Length: limited to 64 ft
- ❑ Beam: max 22 feet
- ❑ Range: 500 nm at cruising speed (16 knots or more)
- ❑ Seakeeping: Operate in 35 ft seas, 50 knot winds, 25 ft breaking surf
- ❑ Self righting in damaged (one compartment free-flooding) condition
- ❑ Two compartment damaged survivability
- ❑ Structural design: high pressure loads on hull
- ❑ Minimum bollard pull: 18,000 lbs
- ❑ Configuration: open and enclosed bridge with port and stbd control stations
- ❑ Accommodations: crew of 4, relief crew of 4, and 5 passengers/survivors
- ❑ Hotel services for multi-day missions: crew rest, sanitation, food, berthing
- ❑ Towing capability emphasized: low speed thrust, maneuverability, 10% power reserve at top speed, aft deck with tow reels, tow post, powered capstan
- ❑ Meet EPA requirements without waiver
- ❑ West Coast delivery and acceptance
- ❑ Draft: max 7 feet
- ❑ Top speed: 20 knots



# SPC-HWX II - Timeline

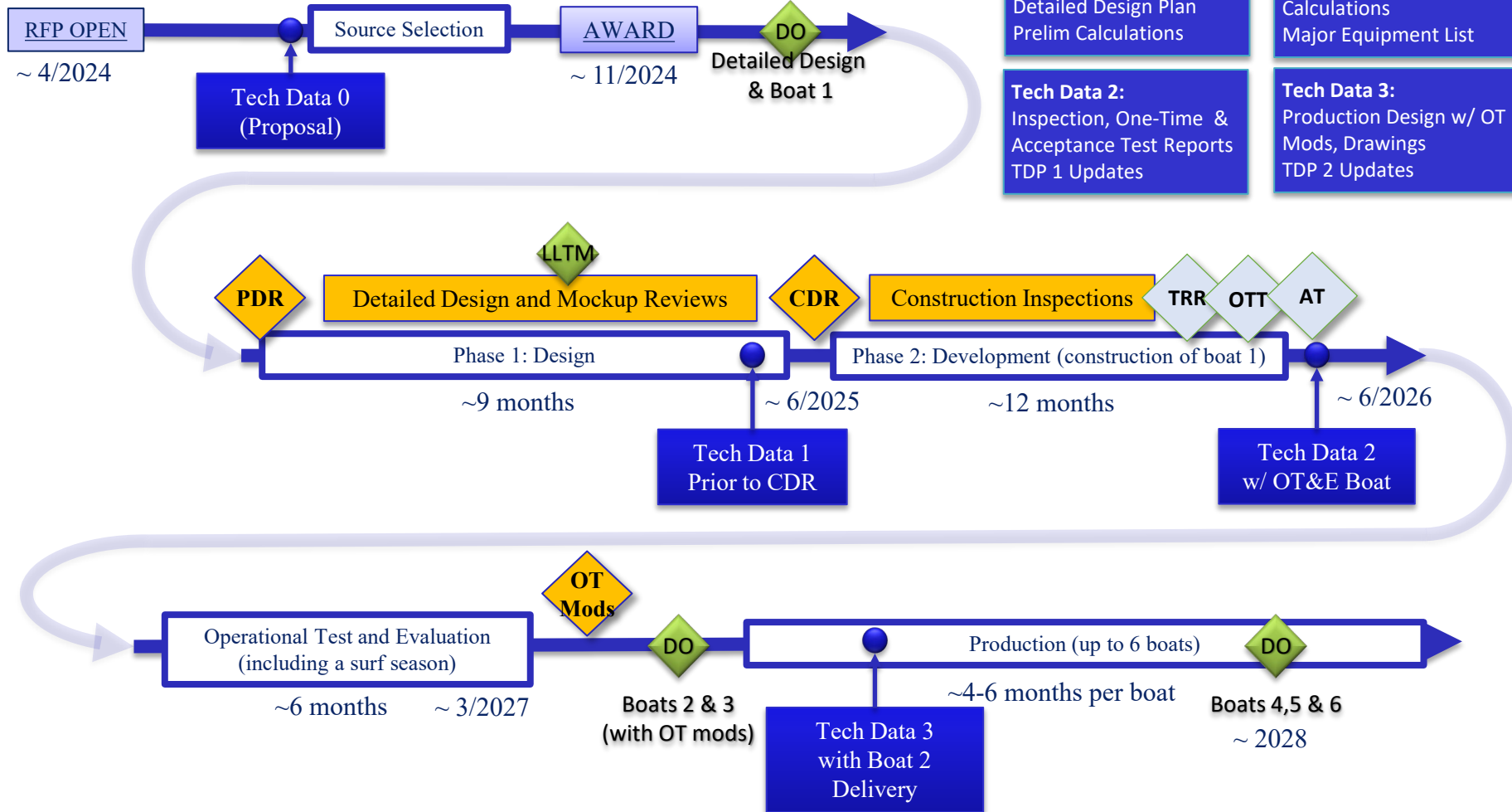
## Deliver up to 6 (2024-2030)

- ❑ **2024:** Apr – RFP release  
Jul – Proposals received  
Nov – Award – Order Design, Development, and Boat 1
- ❑ **2025:** Thru Jun – Phase 1: Design (design reviews)  
May – Authorize LLTM order
- ❑ **2026:** Thru Jun – Phase 2: Development (production boat 1)  
Jun – Deliver Boat 1 for Operational Test
- ❑ **2027:** Thru Mar – Operational Test and Evaluation  
Apr – Incorporate OT Mods  
Jun – Order Boats 2 & 3
- ❑ **2028:** Deliver Boats 2 & 3  
Order Boats 4, 5, and 6
- ❑ **2029-30:** Deliver Boats 4, 5, 6



# SPC-HWX II - Approach

## Written Proposal



# Topics - General

Topic	Discussion Points
Water Intrusion Protection	Seal design, Material selection, enclosures, gaskets, equipment selection
Reliability	Doesn't break
Maintainability	Easy to trouble shoot, easy to fix, modularity
Supportability	Parts available, solid tech data
Technical Data Package	Used to build support system
Boat Structure	Design for Medium speed, high sea state stress – masts
Real-Time Operating Limit Feedback	Real-time indication of accelerations on boat / crew. Adjustable warning points, alarm points
Diesel Outboards / Hybrid Drives	Manage Risk: small exposure, limited quantities, supportable mission profile,
Human Factors	Arrangements, compromises
Obsolescence / transition	SINS 2 to SINS 3 transition - modularity



# Topics – SPC-HWX II

Topic	Discussion Points
RFI Responses	Appreciate Feedback – helps shape the specification
SAR/Towing/Surf	<u>Speed</u> : 20 knots, don't anticipate value for speed above 20 knots <u>Towing</u> : high thrust at low speeds, high lateral stability <u>Surf</u> : aggressive throttle action, rapid thrust reversal (twist)
Structure	USCG Tech Stds, DNV Rules, surf pressure loads = unique requirements
Maintainability	Easy to trouble shoot, easy to fix
Supportability	Parts availability, EPA impact on engine selection – no waiver, solid tech data
Tech Data Package	Used to build USCG support, 2D dwgs to USCG requirements
Design Development	<u>Proposal includes</u> : Design Reviews, data exchange, data format <u>Design collaboration</u> : Early 3D model sharing <u>Intent</u> : Address USCG concerns & issues / resolve interpretations / agree on design prior to construction to minimize change

# Proposal Observations

---

- **Submission Instructions** – Follow them to a tee
- **Requirements** – Explain how you will meet/exceed
- **RFP Changes** – Ask early/before closing date
- **Pre-proposal boats** – If offered, explain value to Government
- **Format/Organization** – Mirror RFP sequence
- **Rounding Errors** – Nothing less than a penny
- **Innovation** – Consider submitting multiple proposals
- **Competition** – Follow instructions to remain competitive



---

# Questions?

- **Feedback or Questions after the WorkBoat Conference can be submitted to: [CG9325-Boatinfo@uscg.mil](mailto:CG9325-Boatinfo@uscg.mil)**

