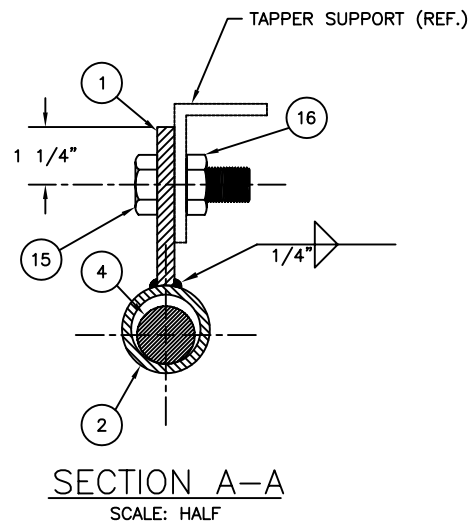
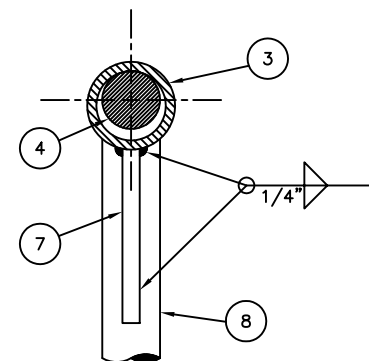


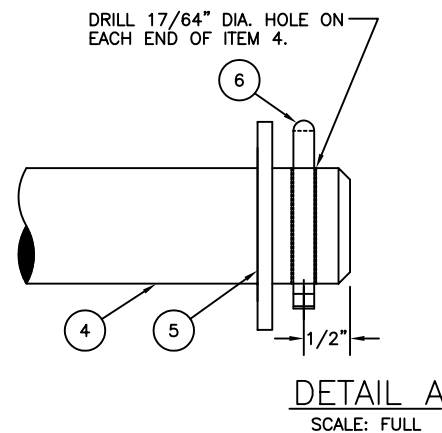
TAPPER ASSEMBLY  
SCALE: 3"=1'-0"



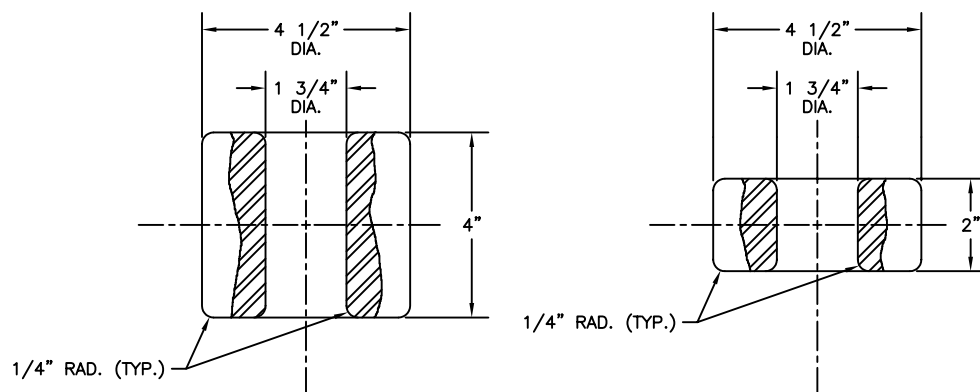
SECTION A-A  
SCALE: HALF



SECTION B-B  
SCALE: HALF



DETAIL A  
SCALE: FULL



11 STANDARD TAPPER BALL  
SCALE: HALF

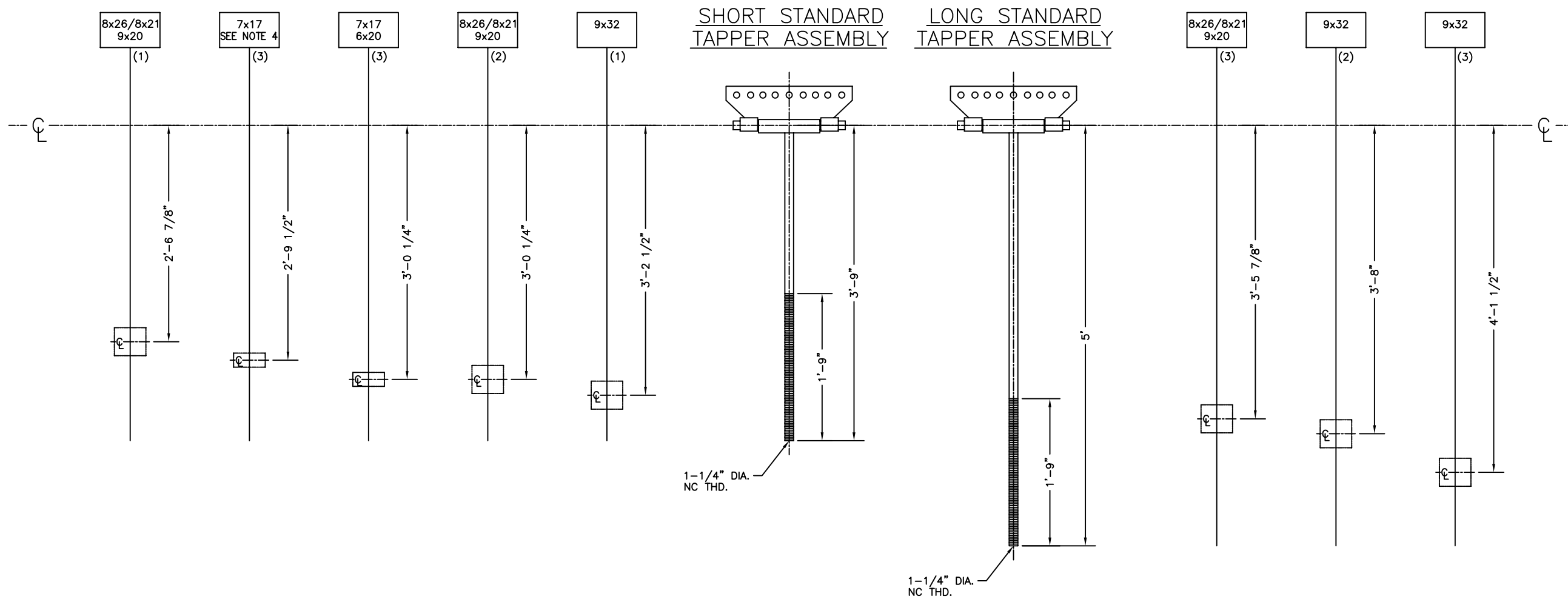
12 SMALL TAPPER BALL  
SCALE: HALF

BILL OF MATERIALS				
ITEM NO.	NO. REQ.	DESCRIPTION	MATL.	REMARKS
1	1	TAPPER ATTACHMENT PLATE	STEEL	3/8" THK.
2	2	TAPPER SWING ROD SPACER	STAIN. STEEL	1 1/2" DIA. XS PIPE
3	1	TAPPER SWING ROD SLEEVE	STAIN. STEEL	1 1/2" DIA. XS PIPE
4	1	TAPPER SWING ROD	STAIN. STEEL	1 1/4" DIA. ROD x 1'-4" LG.
5	2	FLAT WASHER	STAIN. STEEL	1 5/16" ID x 2 1/4" OD x .125 THK.
6	2	COTTER PIN	STAIN. STEEL	1/4" x 2" LG.
7	2	TAPPER ROD STIFFENER	STEEL	3/8" THK.
8	1	TAPPER ROD	STEEL	1 1/4" DIA. ROD SEE SHT. 2
9	2	HEX HEAD JAM NUT	STAIN. STEEL	1 1/4"-7UNC
10	2	CONCAVE WASHER	STAIN. STEEL	1 5/16" ID
11	1	STANDARD TAPPER BALL	WROUGHT IRON	4 1/2" OD x 1 3/4" ID x 4" THK.
12	1	SMALL TAPPER BALL	WROUGHT IRON	4 1/2" OD x 1 3/4" ID x 2" THK.
13	1	RUBBER HOSE	SYN. RUBBER	1 5/16" ID x 1 3/4" OD
14	1	HEX HEAD ELASTIC STOP NUT	STAIN. STEEL	1 1/4"-7UNC SEE NOTE 5
15	5	HEX HEAD BOLT	STAIN. STEEL	3/4"-10UNC x 2" LG.
16	5	HEX HEAD ELASTIC STOP NUT	STAIN. STEEL	3/4"-10UNC

NOTES:

- THIS DRAWING SUPERCEDES U.S.C.G. DRAWING No. 120382, REV. G.
- SEE LATEST REVISION OF U.S.C.G. CIVIL ENGINEERING SPECIFICATION No. 360 FOR FABRICATION REQUIREMENTS.
- ITEM 12 TO BE FURNISHED ONLY ON SHORT STANDARD ASSEMBLY. (FOR USE ON 6x20 AND 7x17 BUOY WITH 85 lb. BELL)
- ITEMS 15 & 16 TO BE FURNISHED WITH EACH TAPPER ASSEMBLY.
- ITEM 14 SHALL MEET THE REQUIREMENTS OF MILITARY SPECIFICATION SHEET MIL-D-45913/1, P/N M45913/1-20C S6.

D	11-01-01	W.D.	MODIFIED QTY REQUIRED FOR ITEM 10.	S.M.
C	10-5-99	S.W.	MODIFIED MATERIAL FOR ITEMS 2, 3, AND 4.	S.M.
B	6-27-99	S.W.	ADDED NOTE 5.	S.M.
A	2-26-93	CAK	MODIFIED MATERIAL FOR ITEMS 11 & 12.	S.M.
REV.	DATE	APPR.	DESCRIPTION	BY
DESIGNED:	GWB	U.S. COAST GUARD HEADQUARTERS		
DRAWN:	SM	CIVIL ENGINEERING		
TRACED:		STANDARD BUOY TAPPERS		
CHECKED:	SM			
REVIEWED BY:				
		C. A. Kohler	PROJECT ENGINEER	
		W. Danzik	G-ECV-3B	
REVIEWED BY:		APPROVED:	S. F. Trenchard	DATE: 11/19/92
UNLESS OTHERWISE SPECIFIED: ALL DIMENSIONS ARE IN INCHES. TOLERANCES: DIM. ±1/8 ANG. ±1°			DRAWING NUMBER	REV.
			121159	D
SCALE: AS NOTED			SHEET 1 OF 2	



**NOTES:**

1. ALL TAPPER BALL LOCATION DIMENSIONS AS SHOWN ARE FOR "REFERENCE ONLY" AND SHOULD BE CHECKED ON EACH BUOY AT ASSEMBLY.
2. REMOVE EXCESS TAPPER THREADS AFTER TAPPER BALL IS LOCATED. (AT ASSEMBLY BY SERVICING UNIT.)
3. USE SMALL TAPPER BALL (ITEM 12) ON TAPPERS FOR 6x20 & 7x17 BUOYS.
4. THIS TAPPER FOR PRE-1993 STYLE 7x17 BUOYS.

**TAPPER NUMBER:**

- #1 USED WITH #1 GONG
- #2 USED WITH #3 GONG
- #3 USED WITH #4 GONG AND BELL

REV.	DATE	APPR.	DESCRIPTION	BY
D	11-01-91	W.D.	MODIFIED QTY REQUIRED FOR ITEM 10.	S.M.
C	10-5-99	S.W.	MODIFIED MATERIAL FOR ITEMS 2, 3, AND 4.	S.M.
B	6-27-99	S.W.	ADDED NOTE 5.	S.M.
A	2-26-93	CAK	MODIFIED MATERIAL FOR ITEMS 11 & 12.	S.M.
DESIGNED: GWB DRAWN: SM TRACED: CHECKED: SM REVIEWED BY:			U.S. COAST GUARD HEADQUARTERS CIVIL ENGINEERING STANDARD BUOY TAPPERS	
C. A. Kohler PROJECT ENGINEER REVIEWED BY:			APPROVED: S. F. Trenchard CHIEF, OCEAN ENGINEERING BRANCH	
W. Danzik G-ECV-3B REVIEWED BY:			DATE: 11/19/92	
UNLESS OTHERWISE SPECIFIED: ALL DIMENSIONS ARE IN INCHES. TOLERANCES: DIM. ±1/8 ANG. ±1°			DRAWING NUMBER: 121159 REV. D	
PLOTING SCALE: 1-1/2"=1'-0"			SCALE: AS NOTED SHEET 2 OF 2	