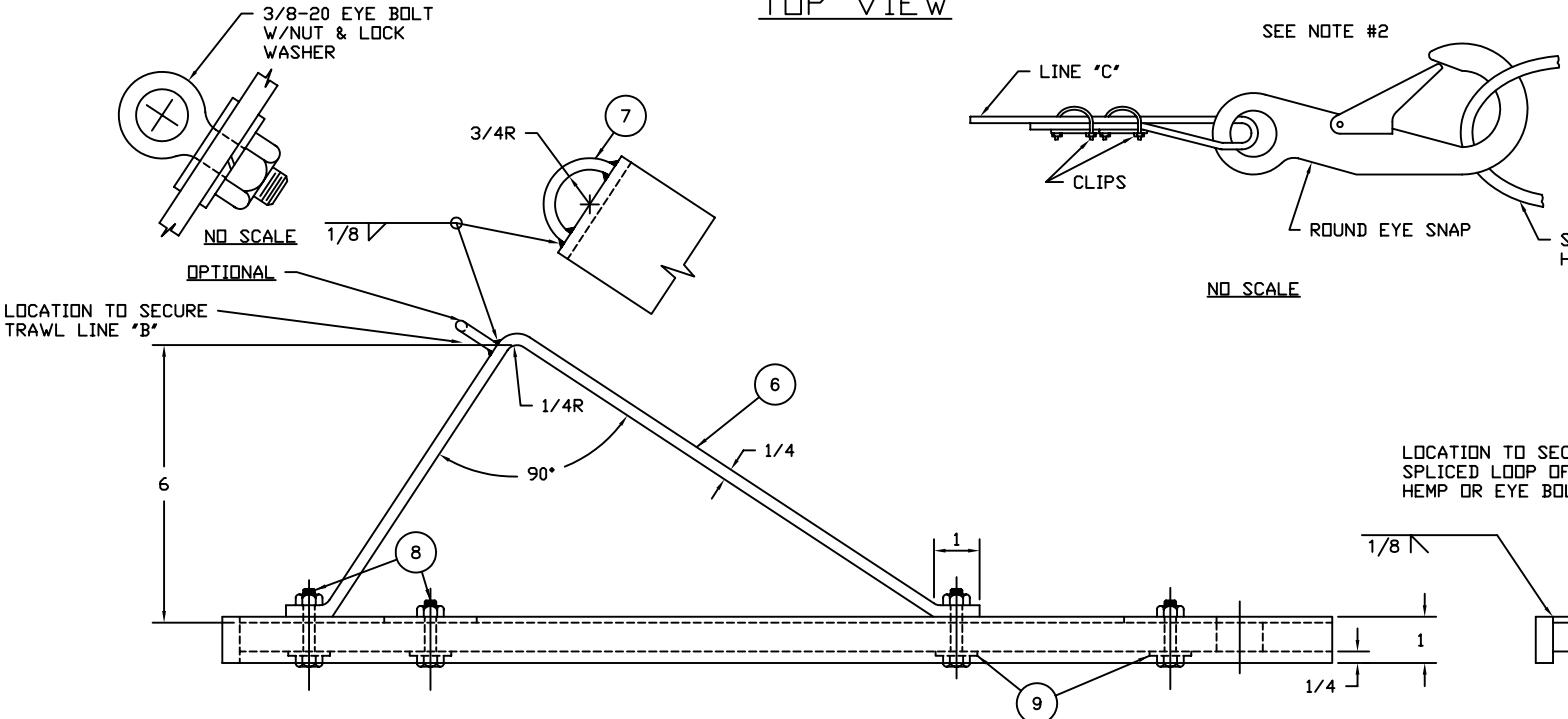


TOP VIEW



SIDE VIEW

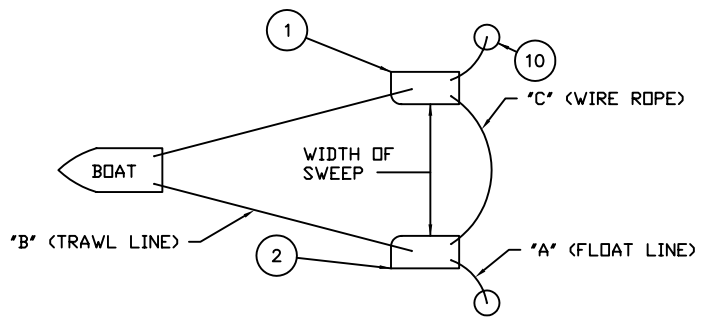
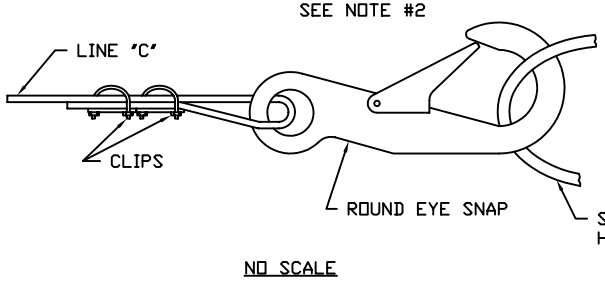


TABLE I

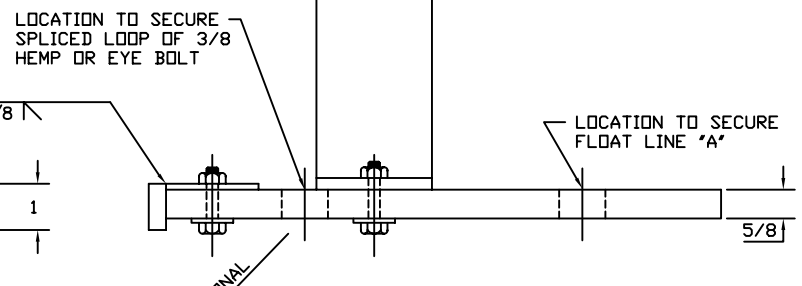
WATER DEPTH	WIDTH OF SWEEP	'A'	'B'	'C'
UP TO 14'	35'	25'	100'	50'
UP TO 14'	60'	25'	125'	75'
UP TO 20'	35'	35'	125'	50'
UP TO 20'	60'	35'	150'	75'

LINE 'A' - FLOAT LINES (3/8 HEMP OR SYNTHETIC)
 LINE 'B' - TRAWL LINES (3/8 TO 1/2 HEMP OR SYNTHETIC)
 LINE 'C' - WIRE ROPE (3/16 DIA.)

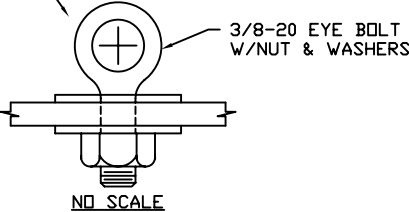
LOCATION TO SECURE SPLICED LOOP OF 3/8 HEMP OR AN EYE BOLT TO BE FURNISHED FOR WIRE ROPE 'C' TO CLIP ONTO.



NO SCALE



END VIEW



NO SCALE

BILL OF MATERIALS

ITEM NO.	NO. REQ.	DESCRIPTION	MATL.	REMARKS
1	1	TRAWL BOARD (STARBOARD)	PLYWOOD	5/8" EXTERIOR GRADE
2	1	TRAWL BOARD (PORT)	PLYWOOD	5/8" EXTERIOR GRADE
3	1	RUNNER (STARBOARD)	STEEL	1 x 3/8 FLAT BAR
4	1	RUNNER (PORT)	STEEL	1 x 3/8 FLAT BAR
5	4	RUNNER PLATE	STEEL	1/8 THK. PLATE
6	2	MOORING BRACKET	STEEL	1/4x2 1/2 FLAT BAR
7	2	MOORING EYE	STEEL	1/4 BAR STOCK
8	8	HEX. HD. SCREW W/NUT	STEEL	1/4-20x1 1/4 LG.
9	8	FLAT WASHER	STEEL	1/16 x 1 O.D. (FOR 1/4 BOLT)
10	2	SPONGE FLOAT	PLASTIC FOAM	3 O.D. 4 HIGH

NOTES:

- THE DIMENSIONS OF THE BOARD, MOORING BRACKET, AND RUNNER AND THE LOCATION OF THE MOORING BRACKET ARE CRITICAL TO THE PERFORMANCE. ALL FASTENING HARDWARE IS OPTIONAL.
- WIRE ROPE 'C' TO BE FURNISHED WITH A ROUND EYE SNAP FASTENED WITH TWO WIRE ROPE CLIPS AT EACH END.
- TABLE I SHOWS THE RECOMMENDED COMBINATIONS TO BE USED FOR SPECIFIC CONDITIONS.
- THESE TRAWL BOARDS ARE DESIGNED FOR USE WITH A 'TANB' OR ANY CRAFT CAPABLE OF SUSTAINING A SPEED OF LESS OF THAN TWO KNOTS AND CAPABLE OF STOPPING QUICKLY.
- RUNNING SPEED IS GOVERNED BY KEEPING THE TWO FLOATS VISIBLE (APPROX. TWO KNOTS OR LESS).
- WHEN RUNNING A SWEEP:
 - MOVE AHEAD SLOWLY (LESS THAN 2 KNOTS).
 - THE FOLLOWING STEPS SHOULD BE DONE WITH 2 MEN TO AVOID FOULING OF THE VARIOUS LINES.
 - DEPLOY WIRE ROPE 'C' (AVOID KINKS).
 - SNAP-ON ONE END OF THE WIRE ROPE 'C' TO EACH TRAWL BOARD.
 - THE CURVE SECTION OF EACH BOARD IS TOWARD THE INSIDE.
 - PLACE BOTH TRAWL BOARDS IN THE WATER AND THROW THE FLOAT LINES 'A' CLEAR.
 - DEPLOY THE TRAWL LINES 'B' SLOWLY TO AVOID FOULING.
 - SECURE THE TRAWL LINES 'B' TO THE PORT AND STARBOARD SIDES OF THE STERN.
 - ADJUST THE VESSEL SPEED SO THAT THE FLOATS ARE ABOVE WATER AND VISIBLE.
 - THE FLOATS WILL STAY AT APPROX. THE SAME WIDTH UNTIL THE CABLE SNAGS AN OBJECT, WHICH WILL CAUSE THE FLOATS TO COME TOGETHER.
 - WHEN THE FLOATS START TO COME TOGETHER, STOP THE ENGINE.
 - TWO MEN HAUL BOAT BACK WITH THE TRAWL LINES 'B' UNTIL THE TRAWL BOARDS ARE PULLED ABOARD. DO NOT USE ENGINE TO ASSIST IN BACKING DOWN SINCE THIS MAY CAUSE FOULING OF LINES OR LINES MAY GO SLACK AND LOSE OBJECT.
 - WITHOUT LOSING TENSION, ONE MAN HAULS IN THE WIRE ROPE 'C' (HELD TOGETHER) UNTIL DIRECTLY OVER THE OBJECT AND ITS EXACT LOCATION IS DETERMINED.
 - ATTEMPT A GOOD STRAIN TO DETERMINE IF OBJECT FOUND IS THE DOWNED AID DESIRED.
 - THIS METHOD WILL WORK! HOWEVER, AS WITH ANY WIRE SWEEPING METHOD, YOU MUST BE PATIENT AND TAKE YOUR TIME.

REV. A	4-19-91	SW	REDRAWN USING AUTOCAD.	DAG
DESIGNED: SDW	U.S. COAST GUARD		HEADQUARTERS	
DRAWN: GWB	OCEAN ENGINEERING WIRE SWEEPING TRAWL BOARDS			
TRACED: DAG				
CHECKED: SDW				
REVIEWED BY:	H. Dudley CH. B & S SEC.		DATE	
REVIEWED BY:	W. W. White CH. SIG. BR.		6-22-76	
UNLESS OTHERWISE SPECIFIED: ALL DIMENSIONS ARE IN INCHES. TOLERANCES: DIM. ANG.			DRAWING NUMBER 120757	REV. A
SCALE: 1/2"=1"			SHEET 1 OF 1	